

# Newsletter



**PUKEKOHE HIGH SCHOOL**

**Issue Three, 31 May 2024**

## From the Principal

Talofa lava (Welcome to Samoan Language Week)

Last week our School Board announced the appointment of Mr Murray Saunders as the new Principal/Tumuaki of Pukekohe High School. This announcement has been very well received and we look forward to Mr Saunders taking up the position at the start of Term Three. During my last five weeks, I look forward to assisting the transition for our new permanent Principal. You'll see a few words from Murray a bit later in this newsletter.



It may feel like we are just into Term Two, but the year is moving along quite quickly. In fact, our seniors have had half of their total 2024 lessons! They will need to be very focussed as they complete numerous NCEA assessments and prepare for their external exams.

We look forward to the new block on Harris St being completely ready, blessed, opened, and used for our teaching and learning. It won't be long now!

There's so much happening that we want to acknowledge and celebrate on social media or in this newsletter. These things may be to do with academic success, performing arts, sports, cultural activities, and/or community service. If there are any great stories or successes that we have missed, please let us know.

Last week our entire Year 12 cohort went to a Road Safety Workshop provided by the RYDA Foundation, who are committed to saving lives (their vision) through the provision of world class road safety education to youth (their mission). Here's the unsolicited feedback we received, *"Your students were a credit to your school both in their behaviour and the manner in which they engaged with the presenters and our volunteers. We were impressed with their attentiveness, and trust that our potentially life-saving messages will stand them in good stead for the future."*

I continue to be impressed by the ability and hard work of our team here at Pukekohe High School as we aim is to ensure that your children/tamariki have a great experience at school, achieve appropriate success, and are confident of a positive pathway ahead.

Ngaa mihi nui

**James Thomas**  
**Tumuaki – Principal**

## New Tumuaki | Principal Introduction



Ko Ingarangi te waahi whakapaparanga ai au

Noo Tamaki Makaurau au

I tipu ake au i Titirangi

Ko Ngaati Paakeha te iwi

Ko Murray Saunders tooku ingoa

Teena koutou katoa

It is my privilege to have been appointed tumuaki/principal of Pukekohe High School. I have been a member of the senior leadership team at school for nine months. Prior to this I was a Deputy Principal at Onehunga High School for six years and a Whaanau House Leader and teacher of Social Studies, History and Te Reo Maori at both Macleans College and Rosehill College.

In my short time at Pukekohe High School, I have taken the opportunity to learn about and connect with our school and the people in it. What has been most noticeable for me during this time is how deep the community roots run in our kura. Be it our links with local businesses, sports clubs, our contributing schools, mana whenua and the marae of our rohe, or the services and organisations that exist to support our students, we are very much a school of, and for, the community. This feature of Pukekohe High School should be continually nurtured and further developed as we move into the next century of the school's life.

As principal from the beginning of term 3, I will be committed to supporting and leading work that has already begun around key focus areas outlined in our annual plan for 2024. These include:

- Increased student attendance and engagement
- Enhancing teaching and learning practices
- Continued building of school culture

As a staff, we are unified in our efforts to support improvement across the school. With a continued focus on these fundamentals, I am convinced that Pukekohe High School will grow from strength to strength and provide our students with a school environment where rangatahi can be the best that they can be. I look forward to meeting, and working together with whaanau, as we strive to achieve this as a school community.

Ngā mihi mahana

**Murray Saunders**

## Attendance Update

As outlined at the beginning of this year, Pukekohe High School has a strategic focus on supporting a drive for improved attendance across the school for our students. Research consistently shows that regular attendance at school is a critical factor in ensuring positive academic and social outcomes for students.

In April 2024, the Government announced a regular attendance target of 80% of students being present for more than 90% of the term by 2030. 90% attendance means that a student would miss less than 5 days across a school term and less than 20 days across a school year. In term 1 of 2024 52% of Pukekohe High School students were in this regularly attending category (90+% attendance).

This year the school is supporting our attendance drive through the following initiatives:

- Informing whaanau of period-by-period attendance through fortnightly attendance reports (as part of the engagement reporting)
- Implementing a late-to-school sign in process to encourage on-time attendance each day
- Following up daily with students who have multiple-day unexplained absences
- Implementing an attendance requirement for participation in the school's co-curricular programme
- Highlighting and celebrating positive attendance at assemblies
- Continuing to support effective teaching practice through our Niho Taniwha Professional Learning Programme

We will continue to work hard with students and whaanau in order to reach the targets that have been set. We are not there yet. Please continue to talk to your young person about the importance of being at school every day. We want our students in front of us as often as possible to maximise their chances of success and to build on our culture of learning at school.

## Student Recognition System

This term we have implemented a student recognition system at school. This is to highlight behaviours and attributes inside and outside of class that contribute to a positive school environment. Staff are asked to recognise student effort and achievement aligned to our school values – Manaakitanga, Puumautanga, Kotahitanga and Aarahitanga – and attribute points to students via our school Kamar system.

As parents, you will be able to see any recognition that your child has received in their fortnightly engagement report.

House: Maahoe		Values/ Recognition credits received to date: 3				
Subject	Engagement	T2 W1&2	T2 W3&4	T2 W5&6	T2 W7&8	T2 W9-10
9ART Year 9	Art Ms W Channings, Ms A Jacobsen <a href="mailto:CNW@pukekohehigh.school.nz">CNW@pukekohehigh.school.nz</a>					
9ENG	English					

## Student Highlights

### Sports update

We currently have the following sports codes competing in winter sports season:

- Basketball – Nine teams competing in the Franklin Basketball Secondary Schools Competition
- Climbing – College Sport Auckland Climbing Competition
- Clay Target Shooting – Auckland, Waikato and Bay of Plenty Secondary Schools Competition
- Football – Four teams competing in the College Sport Counties Manukau Football season.
- Hockey – Two teams competing in the Auckland A grade Hockey competition.
- Lacrosse – One team competing in the A grade Lacrosse season.
- Netball – Eight teams competing in the Counties Manukau Netball Secondary Schools Competition.
- Rugby – Five teams in the Counties Manukau Rugby Competition and one team in the Auckland Rugby Competition.

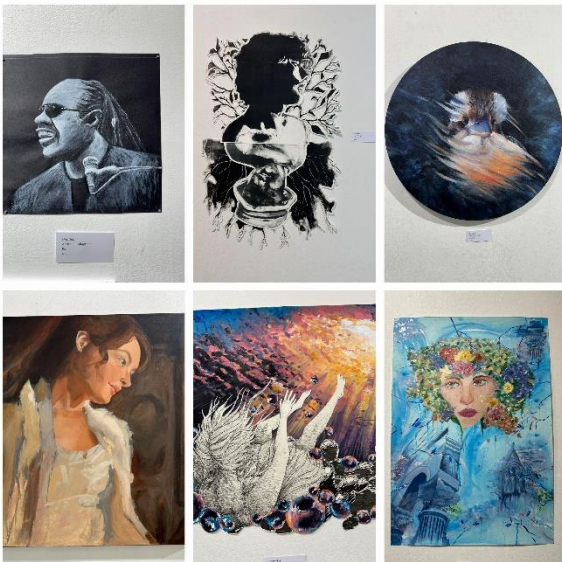
Clay Target had some great results from the Taupo competition this month. Congratulations to Emma Lane, coming 1st in the ladies with a score of 80/90. Squad 1 came 9th out of 22 Teams with a score of 334 and squad 2 came 12th with a score of 319. Our girl's team of Emma and Ava were only two points behind the top girls team with a combined score of 147." *From Team manager, Liz Fry*



Emma Lane

### Community Gallery- Youth Art Exhibition

A number of inspired senior Art students responded to the opportunity to participate in a three week exhibition at the local Community Gallery in the Franklin Arts Centre. The show was organised by a group of Year 12 and 13 art students lead by Logan Hooper. It opened last Saturday and features some very strong work ranging across the fields of painting, printmaking, photography, sculpture and moving image. It is the first of what we intend to be an annual, student-lead event, bringing the work and voices of our talented students to the public and enriching the experiences of our young artists. We love it when our students get hands-on, real-world experiences such as this as they explore what best practice looks like within the creative industries. "I'm so proud of the work of everyone involved" says Logan Hooper. "It has been amazing to see our art students come together to create such an incredible must-see display!"



Please pop in to view the work, support our students, and pick up a little something for yourself or as a gift. Some of the works are for sale direct from the gallery, and prints are available for most pieces if you inquire.

Special thanks to Logan and his great team: Eriko Villejo, Ashleigh Hermitte and Finley Dawson.

## Music Update

Matamata Concert Band Festival – Wind Band Silver award, Concert Band Silver award. Willow Thomson – won the Selwyn Chambers Memorial Cup for best solo feature.



Rockquest Bands – Out of 40 entries, 12 are selected to go through to the regional final. Congratulations to Breadsticks and Blue Room. They will perform at the regional final Friday 7 June 2024.

Rockquest Solo/Duo – Kyra Sheldon and Andre O’Callaghan gained 3rd place. Kyra Sheldon won *Best vocalist award*.

## Curriculum successes – Business groups

### Celebrating Excellence at Young Navigators

We are thrilled to spotlight Jessica Nepia, a remarkable Level 3 Business Studies student from Pukekohe High School, who recently participated in the second-ever Young Navigators event held in Auckland. Selected from an impressive pool of 5,000 students across Aotearoa, Jessica joined 45 Māori and Pasifika students to tackle a pressing challenge on food insecurity.

Jessica represented our school and the Business Hub with great distinction, demonstrating her potential as part of the next generation of entrepreneurs. Her outstanding performance and commitment were not just a personal achievement but also a proud moment for our entire school community.

Here’s what one of our chaperones had to say: "Jessica, thank you for bringing your personality and intelligence to this challenge. You were a credit to your team, school, and community. We look forward to supporting you in your YES journey this year."

We are incredibly proud of Jessica’s achievements and are excited to see where her entrepreneurial spirit takes her next.



## Homework clubs

It has been pleasing to see the resumption of two regular homework clubs on Fridays after school. The Pasifika (library) and Wānanga (Te Hikoi) clubs are open to all students and offer staff support for any homework or assessment preparation that students may have. A positive, learning-focussed environment has been created within both of these clubs. We are grateful for both the students and staff who attend.

## NCEA Common Assessment Activities

In week 5 of the term approximately 260 Year 11 students had an opportunity to sit their NCEA Common Assessment Activities (CAA) to gain their literacy and numeracy corequisites. This new feature of the NCEA system is required moving forward to enable all students to achieve their level 1-3 qualifications. Year 11 students at Pukekohe High School are prepared for these corequisites through the weekly timetabled Skills classes that occur on Wednesday mornings. Results for the CAAs are expected to be made available to students early in term 3.

A second round of CAAs will be offered in term 3. Year 10 students will have an opportunity to participate in this.

## Community

### NZQA Top Art Exhibition

In week 2 of the term, Pukekohe High School hosted the top NCEA art boards for the community to come and view.

### Big School Little School

Ten Pukekohe High School students attended this event in week 3 of term 2, supporting Early Childhood Centres and Primary Schools in Pukekohe.

### Pink Shirt Day

Students celebrated and supported the nationwide Pink Shirt Day on 17 May.

### Term 2 Whaanu Hui

In week 4 of the term, Whaanau came together to hear about some of the developments in Te Waahanga Whakaako (Māori department) and share their insights into the school.

### Samoan Language Week Performance

In week 5, to support Samoan Language Week, a group of students visited Pukekohe North School to perform for their students.

### Subject Teacher Interviews

In week 5 the school hosted approximately 400 whaanau for our subject teacher interviews (junior students). We look forward to the senior subject teacher interviews in week 6, Thursday 13 June.



## Important Dates

### **Week 6:**

- King's Birthday | Monday 3 June School CLOSED
- Senior Leadership Team year level assemblies
- Mobile Blood Drive | Friday 7 June 9am – 1pm

### **Week 7:**

- Kaitiaki-led year level assemblies
- Senior subject teacher interviews | Thursday 13 June (school finishes at 1.40pm)
- 2025 Pathways Programme assembly | Thursday 13 June (Year 11)

### **Week 8:**

- House Assemblies
- Inspiring Futures Assembly (Years 11-12) | Tuesday 18 June
- 2025 Pathways Programme parent meeting | Wednesday 19 June (Year 11)
- Y11 Commerce: PHS FrostFusion Fiesta | Thursday 20 June 3.00pm – 8.00pm

### **Week 9:**

- Senior Leadership Team year level assemblies
- Matariki Holiday | Friday 28 June School CLOSED

### **Week 10:**

- Kaitiaki lead year level assemblies
- End of term 2 | Friday 05 July (normal finish time)